

ENTWINED

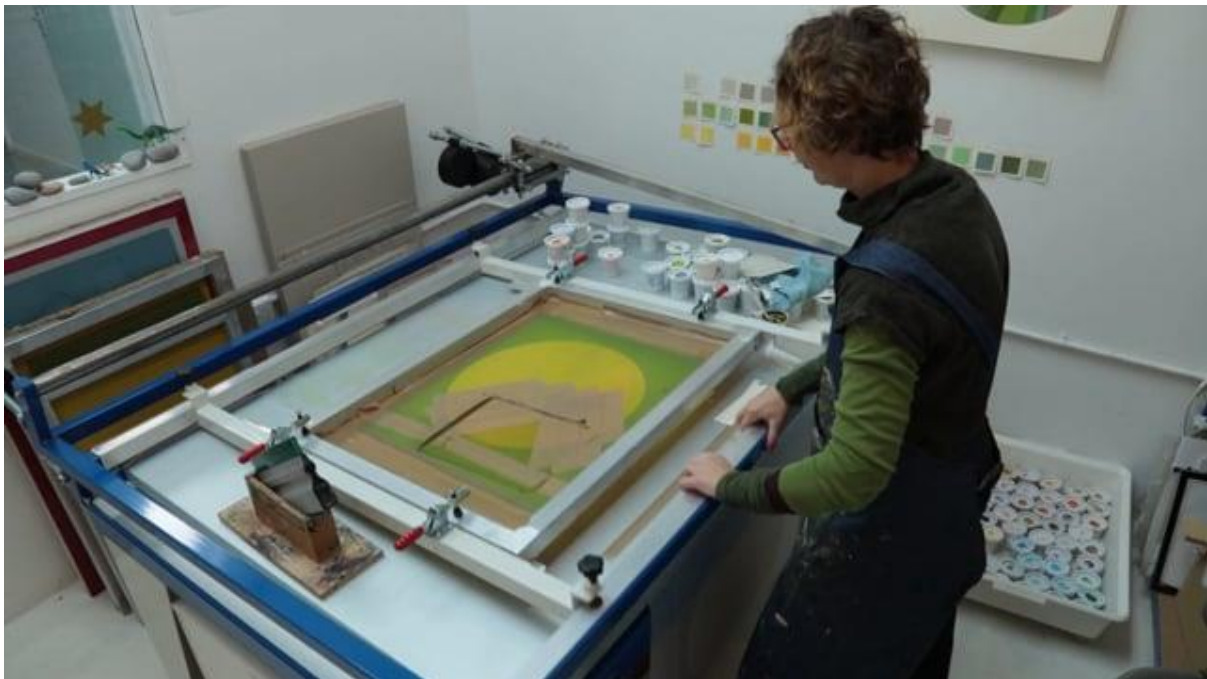
RURAL · LAND · LIVES · ART

Resource Pack 2: Emily Ketteringham

We would love to see any artwork produced so please share images with us by emailing them to helen@varc.org.uk . Use **#EntwinedRuralLandLivesArt** if you post on social media and the VARC handles: Visual Arts in Rural Communities (Facebook), @varc_arts (Twitter), varc_arts (Instagram).

ENTWINED: Rural. Land. Lives. Art. is a multi-partner project led by Visual Arts in Rural Communities (VARC) and comprises 6 mixed length residencies and 2 associated artist projects. Through the artists' practice, different aspects of what makes a 'place' will be explored and the interconnectedness of rural land and rural lives revealed.

Emily is a printmaker who specialises in screen printing. Her work focuses on walking and exploring colours in the landscape. She will spend one month with Unison Colour Pastels as part of her ENTWINED residency. You can watch a short film of the artist in her studio talking about her working processes and inspirations here:



Emily Ketteringham video above found on Vimeo here: <https://vimeo.com/516723378>

More about Emily's residency here: <https://varc.org.uk/entwined/artists/emily-ketteringham/>

Walking and art

Many, many artists through the ages have been inspired by landscape, but for some, using walking and walks – both urban and countryside – is part of the process they use for making work. You can read more about artists combining walking and art here:

<https://glasstire.com/2012/11/23/the-ten-list-walk-as-art/>

<https://daily.istor.org/the-art-of-walking/>

Activities to try

Emily Ketteringham explores colours from walking in a wide range of landscapes in her work, which then provides a visual record of walks and places. You can use this process yourself to record places that are familiar and/or important to you.

Explore and use shades of one colour to create a colour study. Experiment with different media and record your colours in different ways visually, e.g. using colour blocks, stripes, circles or lines

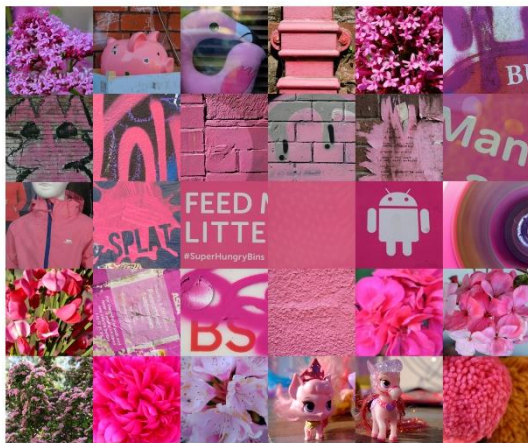


Make an every pencil drawing. Use colour pencils to create a line drawing using every colour pencil you have. Think carefully about where you position each colour and vary the intensity of the colour using the thickness of the line or the pressure you use when drawing.

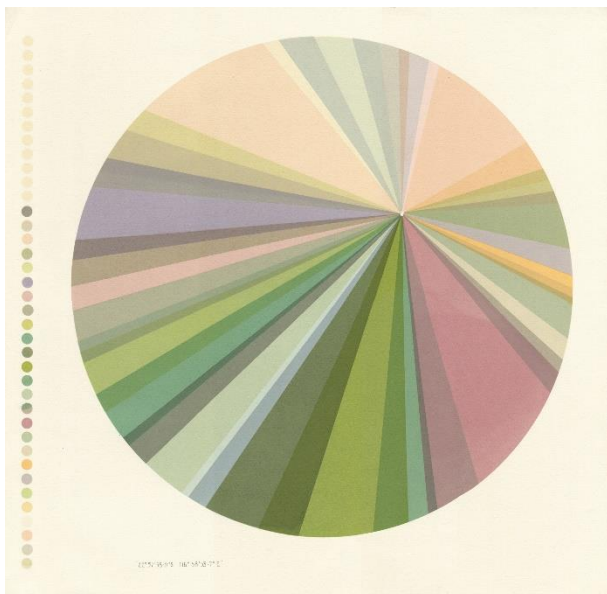


Emily Ketteringham using every pen and pencil she could find to make a line drawing

Try your own colour walk. It can be as short or as long as you like – a walk around your garden, your walk to school, or around your school grounds, local park or somewhere else that’s special to you. Your walk can focus on the countryside or an urban environment – the aim is to record visually the colours you encounter as you walk. Record your colours as you take your walk – you may find using a camera, a small watercolour box or colour pencils is useful for this. Use your colour walk palette to create your own unique artwork in whatever medium you want – paint (a great way to practice colour mixing), collage, printmaking or colour pencils (try layering pencil colours to create the shades you need).



Create a colour palette collage. Use Emily Ketteringham’s circle prints as inspiration to create your own personal colour palette from a place special to you – it could be your home, your bedroom, somewhere in your school environment – anywhere you want. Use magazines to find and use the colours in your place-focused collage.



Emily Ketteringham’s print alongside a palette of colours found in Emily’s house



Visual Arts in
Rural Communities



Supported using public funding by
**ARTS COUNCIL
ENGLAND**